



SERVICE MANUAL

HAND MICROPHONE

HM-151

S-14526XZ-C1-①
Dec. 2009

Icom Inc.

INTRODUCTION

This service manual describes the latest service information for the **HM-151** HAND MICROPHONE, at the time of publication.

MODEL NAME	VERSION
HM-151	[GEN]
	[GEN-02]
	[GEN-01]
	[EXP]

To upgrade quality, all electrical or mechanical parts and internal circuits are subject to change without notice or obligation.

ORDERING PARTS

Be sure to include the following four points when ordering replacement parts:

1. 10-digit Icom part number
2. Component name and informations
3. Equipment model name and unit name
4. Quantity required

<SAMPLE ORDER>

8810009610 Screw FH M2.6 × 6 ZK HM-151 Top cover 10 pieces

Addresses are provided on the inside back cover for your convenience.

REPAIR NOTES

1. Make sure the problem is internal before disassembling the speaker microphone.
2. **DO NOT** open the speaker microphone until the transceiver is disconnected from its power source.
3. **DO NOT** force any of the variable components. Turn them slowly and smoothly.
4. **DO NOT** short any circuits or electronic parts. An insulated tuning tool **MUST** be used for all adjustments.
5. **DO NOT** keep power ON for a long time when the speaker microphone is defective.



TABLE OF CONTENTS

SECTION 1 PARTS LIST

SECTION 2 MECHANICAL PARTS

SECTION 3 BOARD LAYOUTS

SECTION 4 CIRCUIT DIAGRAMS

SECTION 1

PARTS LIST

[MAIN UNIT] (For [GEN], [GEN-1])

REF NO.	PARTS NO.	DESCRIPTION	M.	H/V LOCATION
IC1	1140011491	S.IC UPD789071MC-041-5A4-E1-A	B	51.1/24.5
IC3	1110006310	S.IC BD5245G-TR	B	67.3/34.8
Q1	1530001941	S.TRA 2SC2712-BL(TE85L,F)	B	26.1/11
Q2	1590000680	S.TRA DTC114EUA T106	B	21.6/34.8
Q3	1590001330	S.TRA DTA114EUA T106	B	24.7/34.8
Q5	1510000771	S.TRA 2SA1586-GR(TE85L,F)	B	54.8/37.8
D1	1790000950	S.ZEN MA8056-M(TX)	B	23.1/17
D3	1750000940	S.DIO ISS400 TE61	B	64.7/23.2
D4	1750000940	S.DIO ISS400 TE61	B	64.7/29.2
D6	1750000940	S.DIO ISS400 TE61	B	58.7/20.8
D7	1750000940	S.DIO ISS400 TE61	B	42.8/16.7
D9	1750000940	S.DIO ISS400 TE61	B	34.1/16.3
D10	1750000940	S.DIO ISS400 TE61	B	34.9/17.8
D11	1750000940	S.DIO ISS400 TE61	B	38.8/14.5
D12	1750000940	S.DIO ISS400 TE61	B	55/34.3
D16	1730002280	S.ZEN MA8091-M(TX)	B	55.2/14.5
D17	1730002280	S.ZEN MA8091-M(TX)	B	48.8/14.5
D18	1730002280	S.ZEN MA8091-M(TX)	B	13.1/13.7
X1	6060000860	S.CER PBRC4.91HR30X	B	42.6/22.3
L1	6200005051	S.COI NLV25T-330J	B	12.3/29
L2	6200005011	S.COI NLV25T-100J	B	11/13.9
R2	7030000400	S.RES MCR10EZJH 1.5K (152)	B	24.2/8.3
R3	7030000400	S.RES MCR10EZJH 1.5K (152)	B	41.9/8.3
R4	7030000400	S.RES MCR10EZJH 1.5K (152)	B	57.3/8.2
R5	7030003400	S.RES ERJ3GEYJ 471 V (470)	B	28.6/11.2
R6	7030003620	S.RES ERJ3GEYJ 333 V (33K)	B	26.8/34.7
R7	7030003620	S.RES ERJ3GEYJ 333 V (33K)	B	23.3/36.8
R8	7030003550	S.RES ERJ3GEYJ 822 V (8.2K)	B	19.1/33.7
R11	7030003480	S.RES ERJ3GEYJ 222 V (2.2K)	B	52.3/38.7
R12	7030003560	S.RES ERJ3GEYJ 103 V (10K)	B	57/35
R13	7030003490	S.RES ERJ3GEYJ 272 V (2.7K)	B	53/35
R14	7030003440	S.RES ERJ3GEYJ 102 V (1K)	B	47.2/6.1
R18	7030003560	S.RES ERJ3GEYJ 103 V (10K)	B	41.6/33.6
R19	7030003640	S.RES ERJ3GEYJ 473 V (47K)	B	38.4/34.5
R22	7030003520	S.RES ERJ3GEYJ 472 V (4.7K)	B	37.9/18.7
R23	7030003520	S.RES ERJ3GEYJ 472 V (4.7K)	B	56.1/18.1
R24	7030003520	S.RES ERJ3GEYJ 472 V (4.7K)	B	58/18.6
R25	7030003520	S.RES ERJ3GEYJ 472 V (4.7K)	B	59.8/18.9
R27	7030003560	S.RES ERJ3GEYJ 103 V (10K)	B	68.1/32.5
R35	7030000400	S.RES MCR10EZJH 1.5K (152)	B	69.1/11.9
R36	7030003560	S.RES ERJ3GEYJ 103 V (10K)	B	20.5/30.6
R37	7030003460	S.RES ERJ3GEYJ 152 V (1.5K)	B	19.1/30.6
R39	7030003480	S.RES ERJ3GEYJ 222 V (2.2K)	B	24.4/5.7
R40	7030003480	S.RES ERJ3GEYJ 222 V (2.2K)	B	24.4/3
R41	7030003580	S.RES ERJ3GEYJ 153 V (15K)	B	17/32.7
R42	7030003860	S.RES ERJ3GE JPW V	B	68.4/21.6
R44	7030003440	S.RES ERJ3GEYJ 102 V (1K)	B	57.3/22.1
R45	7030003440	S.RES ERJ3GEYJ 102 V (1K)	B	53.9/18
R46	7030003440	S.RES ERJ3GEYJ 102 V (1K)	B	37.8/15.8
R47	7030003440	S.RES ERJ3GEYJ 102 V (1K)	B	37.6/17.1
R48	7030003440	S.RES ERJ3GEYJ 102 V (1K)	B	45.3/17.6
R49	7030003440	S.RES ERJ3GEYJ 102 V (1K)	B	57.3/26.2
R50	7030003440	S.RES ERJ3GEYJ 102 V (1K)	B	58.1/23.4
C1	4030006850	S.CER C1608 JB 1H 471K-T	B	52/16.9
C2	4510008500	S.ELE EEE1CA101WP	B	35.5/5.8
C5	4030007050	S.CER C1608 CH 1H 220J-T	B	14.9/30.4
C9	4030007050	S.CER C1608 CH 1H 220J-T	B	20.8/16.8
C10	4030007050	S.CER C1608 CH 1H 220J-T	B	19.8/11.6
C11	4030007050	S.CER C1608 CH 1H 220J-T	B	17/5.6
C12	4030011600	S.CER C1608 JB 1E 104K-T	B	64.9/34.4
C13	4030011600	S.CER C1608 JB 1E 104K-T	B	44.3/27.6
C14	4030006900	S.CER C1608 JB 1H 103K-T	B	67.5/37.2
C16	4030006860	S.CER C1608 JB 1H 102K-T	B	14.7/13.6
C17	4030006880	S.CER C1608 JB 1H 472K-T	B	11.7/17.4
C18	4030006880	S.CER C1608 JB 1H 472K-T	B	10.4/17.4
C19	4030011600	S.CER C1608 JB 1E 104K-T	B	13/25.8
C21	4030011600	S.CER C1608 JB 1E 104K-T	B	11.7/25.9
C22	4030011600	S.CER C1608 JB 1E 104K-T	B	10.4/28.7
C23	4030011600	S.CER C1608 JB 1E 104K-T	B	23.1/14
C24	4030011600	S.CER C1608 JB 1E 104K-T	B	67.2/12.1
C25	4030011600	S.CER C1608 JB 1E 104K-T	B	25.6/32.2
C26	4030011600	S.CER C1608 JB 1E 104K-T	B	44.5/6.1
C27	4030011600	S.CER C1608 JB 1E 104K-T	B	51.7/35
C29	4510008540	S.ELE EEE1CA100SR	B	26.4/16
C30	4030010210	S.CER C3216 JB 1C 105M-T	B	19.8/4.6
C31	4510008540	S.ELE EEE1CA100SR	B	28.3/4.9
C32	4030011600	S.CER C1608 JB 1E 104K-T	B	55/35.8
J1	6510023110	CON 3008L-8P8C <KIN>		
DS1	5010000120	S.LED LN1371G-(TR)	T	21.9/11
DS2	5010000120	S.LED LN1371G-(TR)	T	21.9/32
DS3	5010000120	S.LED LN1371G-(TR)	T	39.3/11
DS4	5010000120	S.LED LN1371G-(TR)	T	39.3/32

[MAIN UNIT] (For [GEN], [GEN-1])

REF NO.	PARTS NO.	DESCRIPTION	M.	H/V LOCATION
DS5	5010000120	S.LED LN1371G-(TR)	T	55.9/2.5
DS6	5010000120	S.LED LN1371G-(TR)	T	56.2/26.8
DS7	5010000120	S.LED LN1371G-(TR)	T	71.7/14.8
DS8	5010000120	S.LED LN1371G-(TR)	T	72.2/33.8
DS10	5040002890	S.LED SML-310FT T86	T	51.6/5
DS11	5040002620	S.LED SML-311UT T86	T	51.6/38
MC1	7700002850	MIC EM6022P-65B-G <HOR>		
S1	2260000980	SWI SKHHLPO14A		
EP1	6910012350	S.BEA MMZ1608Y 102BT	B	10.4/26.1
EP2	6910012350	S.BEA MMZ1608Y 102BT	B	14.3/17.4
EP3	6910012350	S.BEA MMZ1608Y 102BT	B	13/17.4
EP4	6910012350	S.BEA MMZ1608Y 102BT	B	14.7/11
EP5	6910012350	S.BEA MMZ1608Y 102BT	B	15/25

M.=Mounted side (T: Mounted on the Top side, B: Mounted on the Bottom side)
S.=Surface mount

[MAIN-A UNIT] (For [GEN-02], [EXP])

REF NO.	PARTS NO.	DESCRIPTION	M.	H/V LOCATION
IC1	1140011491	S.IC UPD789071MC-041-5A4-E1-A	B	51.1/24.5
IC3	1110006310	S.IC BD5245G-TR	B	67.3/34.8
IC6	1130012030	S.IC BR24L02FV-WE2		
Q1	1530001820	S.TRA 2SC2412K WT T147 S	B	26.1/11
Q2	1590000680	S.TRA DTC114EUA T106	B	21.6/34.8
Q3	1590001330	S.TRA DTA114EUA T106	B	24.7/34.8
Q5	1510000510	S.TRA 2SA1576A T106R	B	54.8/37.8
D1	1730002750	S.ZEN UDZSTE-17 5.6B	B	23.1/17
D3	1750000940	S.DIO ISS400 TE61	B	64.7/23.2
D4	1750000940	S.DIO ISS400 TE61	B	64.7/29.2
D6	1750000940	S.DIO ISS400 TE61	B	58.7/20.8
D7	1750000940	S.DIO ISS400 TE61	B	42.8/16.7
D9	1750000940	S.DIO ISS400 TE61	B	34.1/16.3
D10	1750000940	S.DIO ISS400 TE61	B	34.9/17.8
D11	1750000940	S.DIO ISS400 TE61	B	38.8/14.5
D12	1750000940	S.DIO ISS400 TE61	B	55/34.3
D16	1730002760	S.ZEN UDZSTE-17 9.1B	B	55.2/14.5
D17	1730002760	S.ZEN UDZSTE-17 9.1B	B	48.8/14.5
D18	1730002760	S.ZEN UDZSTE-17 9.1B	B	13.1/13.7
X1	6060000860	S.CER PBRC4.91HR30X	B	42.6/22.3
L1	6200005051	S.COI NLV25T-330J	B	12.3/29
L2	6200005011	S.COI NLV25T-100J	B	11/13.9
R2	7030000400	S.RES MCR10EZJH 1.5K (152)	B	24.2/8.3
R3	7030000400	S.RES MCR10EZJH 1.5K (152)	B	41.9/8.3
R4	7030000400	S.RES MCR10EZJH 1.5K (152)	B	57.3/8.2
R5	7030012150	S.RES MCR03EZPJ 470 (471)	B	28.6/11.2
R6	7030012140	S.RES MCR03EZPJ 33 K (333)	B	26.8/34.7
R7	7030012140	S.RES MCR03EZPJ 33 K (333)	B	23.3/36.8
R8	7030012180	S.RES MCR03EZPJ 8.2K (822)	B	19.1/33.7
R11	7030012100	S.RES MCR03EZPJ 2.2K (222)	B	52.3/38.7
R12	7030012120	S.RES MCR03EZPJ 10 K (103)	B	57/35
R13	7030012170	S.RES MCR03EZPJ 2.7K (272)	B	53/35
R14	7030012110	S.RES MCR03EZPJ 1 K (102)	B	47.2/6.1
R18	7030012120	S.RES MCR03EZPJ 10 K (103)	B	41.6/33.6
R19	7030012090	S.RES MCR03EZPJ 47 K (473)	B	38.4/34.5
R22	7030012080	S.RES MCR03EZPJ 4.7K (472)	B	37.9/18.7
R23	7030012080	S.RES MCR03EZPJ 4.7K (472)	B	56.1/18.1
R24	7030012080	S.RES MCR03EZPJ 4.7K (472)	B	58/18.6
R25	7030012080	S.RES MCR03EZPJ 4.7K (472)	B	59.8/18.9
R27	7030012120	S.RES MCR03EZPJ 10 K (103)	B	68.1/32.5
R35	7030000400	S.RES MCR10EZJH 1.5K (152)	B	69.1/11.9
R36	7030012120	S.RES MCR03EZPJ 10 K (103)	B	20.5/30.6
R37	7030012070	S.RES MCR03EZPJ 1.5K (152)	B	19.1/30.6
R39	7030012100	S.RES MCR03EZPJ 2.2K (222)	B	24.4/5.7
R40	7030012100	S.RES MCR03EZPJ 2.2K (222)	B	24.4/3
R41	7030012190	S.RES MCR03EZPJ 15 K (153)	B	17/32.7
R42	7030012050	S.RES MCR03EZPJ JPW (000)	B	68.4/21.6
R44	7030012110	S.RES MCR03EZPJ 1 K (102)	B	57.3/22.1
R45	7030012110	S.RES MCR03EZPJ 1 K (102)	B	53.9/18
R46	7030012110	S.RES MCR03EZPJ 1 K (102)	B	37.8/15.8
R47	7030012110	S.RES MCR03EZPJ 1 K (102)	B	37.6/17.1
R48	7030012110	S.RES MCR03EZPJ 1 K (102)	B	45.3/17.6
R49	7030012110	S.RES MCR03EZPJ 1 K (102)	B	57.3/26.2
R50	7030012110	S.RES MCR03EZPJ 1 K (102)	B	58.1/23.4
C1	4030006850	S.CER C1608 JB 1H 471K-T	B	52/16.9
C2	4510008500	S.ELE EEE1CA101WP	B	35.5/5.8
C5	4030007050	S.CER C1608 CH 1H 220J-T	B	14.9/30.4
C9	4030007050	S.CER C1608 CH 1H 220J-T	B	20.8/16.8
C10	4030007050	S.CER C1608 CH 1H 220J-T	B	19.8/11.6
C11	4030007050	S.CER C1608 CH 1H 220J-T	B	17/5.6
C12	4030011600	S.CER C1608 JB 1E 104K-T	B	64.9/34.4
C13	4030011600	S.CER C1608 JB 1E 104K-T	B	44.3/27.6
C14	4030006900	S.CER C1608 JB 1H 103K-T	B	67.5/37.2
C16	4030006860	S.CER C1608 JB 1H 102K-T	B	14.7/13.6
C17	4030006880	S.CER C1608 JB 1H 472K-T	B	11.7/17.4
C18	4030006880	S.CER C1608 JB 1H 472K-T	B	10.4/17.4
C19	4030011600	S.CER C1608 JB 1E 104K-T	B	13/25.8
C21	4030011600	S.CER C1608 JB 1E 104K-T	B	11.7/25.9
C22	4030011600	S.CER C1608 JB 1E 104K-T	B	10.4/28.7
C23	4030011600	S.CER C1608 JB 1E 104K-T	B	23.1/14
C24	4030011600	S.CER C1608 JB 1E 104K-T	B	67.2/12.1
C25	4030011600	S.CER C1608 JB 1E 104K-T	B	25.6/32.2
C26	4030011600	S.CER C1608 JB 1E 104K-T	B	44.5/6.1
C27	4030011600	S.CER C1608 JB 1E 104K-T	B	51.7/35
C29	4510008540	S.ELE EEE1CA100SR	B	26.4/16
C30	4030010210	S.CER C3216 JB 1C 105M-T	B	19.8/4.6
C31	4510008540	S.ELE EEE1CA100SR	B	28.3/4.9
C32	4030011600	S.CER C1608 JB 1E 104K-T	B	55/35.8
J1	6510023110	CON 3008L-8P8C <KIN>		
DS1	5010000120	S.LED LN1371G-(TR)	T	21.9/11
DS2	5010000120	S.LED LN1371G-(TR)	T	21.9/32
DS3	5010000120	S.LED LN1371G-(TR)	T	39.3/11
DS4	5010000120	S.LED LN1371G-(TR)	T	39.3/32
DS5	5010000120	S.LED LN1371G-(TR)	T	55.9/2.5
DS6	5010000120	S.LED LN1371G-(TR)	T	56.2/26.8
DS7	5010000120	S.LED LN1371G-(TR)	T	71.7/14.8
DS8	5010000120	S.LED LN1371G-(TR)	T	72.2/33.8
DS10	5040002890	S.LED SML-310FT T86	T	51.6/5

[MAIN-A UNIT] (For [GEN-02], [EXP])

REF NO.	PARTS NO.	DESCRIPTION	M.	H/V LOCATION
DS11	5040002620	S.LED SML-311UT T86	T	51.6/38
MC1	7700002850	MIC EM6022P-65B-G <HOR>		
S1	2260000980	SWI SKHHLPO14A		
EP1	6910012350	S.BEA MMZ1608Y 102BT	B	10.4/26.1
EP2	6910012350	S.BEA MMZ1608Y 102BT	B	14.3/17.4
EP3	6910012350	S.BEA MMZ1608Y 102BT	B	13/17.4
EP4	6910012350	S.BEA MMZ1608Y 102BT	B	14.7/11
EP5	6910012350	S.BEA MMZ1608Y 102BT	B	15/25

M.=Mounted side (T: Mounted on the Top side, B: Mounted on the Bottom side)
S.=Surface mount

SECTION 2

MECHANICAL PARTS

[CHASSIS PARTS] (For [GEN], [GEN-1])

REF. NO.	ORDER NO.	DESCRIPTION	QTY.
W1	8900011272	OPC-1153B <TJM>	1
MP1	8210021920	2539 FRONT PANEL(C)	1
MP2	8210018840	2539 REAR PANEL	1
MP3	8930057380	2539 PTT BUTTON	1
MP4	8930057390	2539 LED LENS	2
MP5	8930057570	2539 SW RUBBER	1
MP6	8930066540	2539 KEYBOARD(C)	1
MP8	8810009371	PAN HEAD BT M3 X12 NI-ZK3	2
MP9	8810009561	PAN HEAD BT M2 X 6 NI-ZK3	3

[MAIN UNIT] (For [GEN], [GEN-1])

REF. NO.	ORDER NO.	DESCRIPTION	QTY.
J1	6510023110	CONNECTOR 3008L-8P8C	1
S1	2260000980	SWITCH SKHHL014A	1
MC1	7700002850	EM6022P-65B-G	1

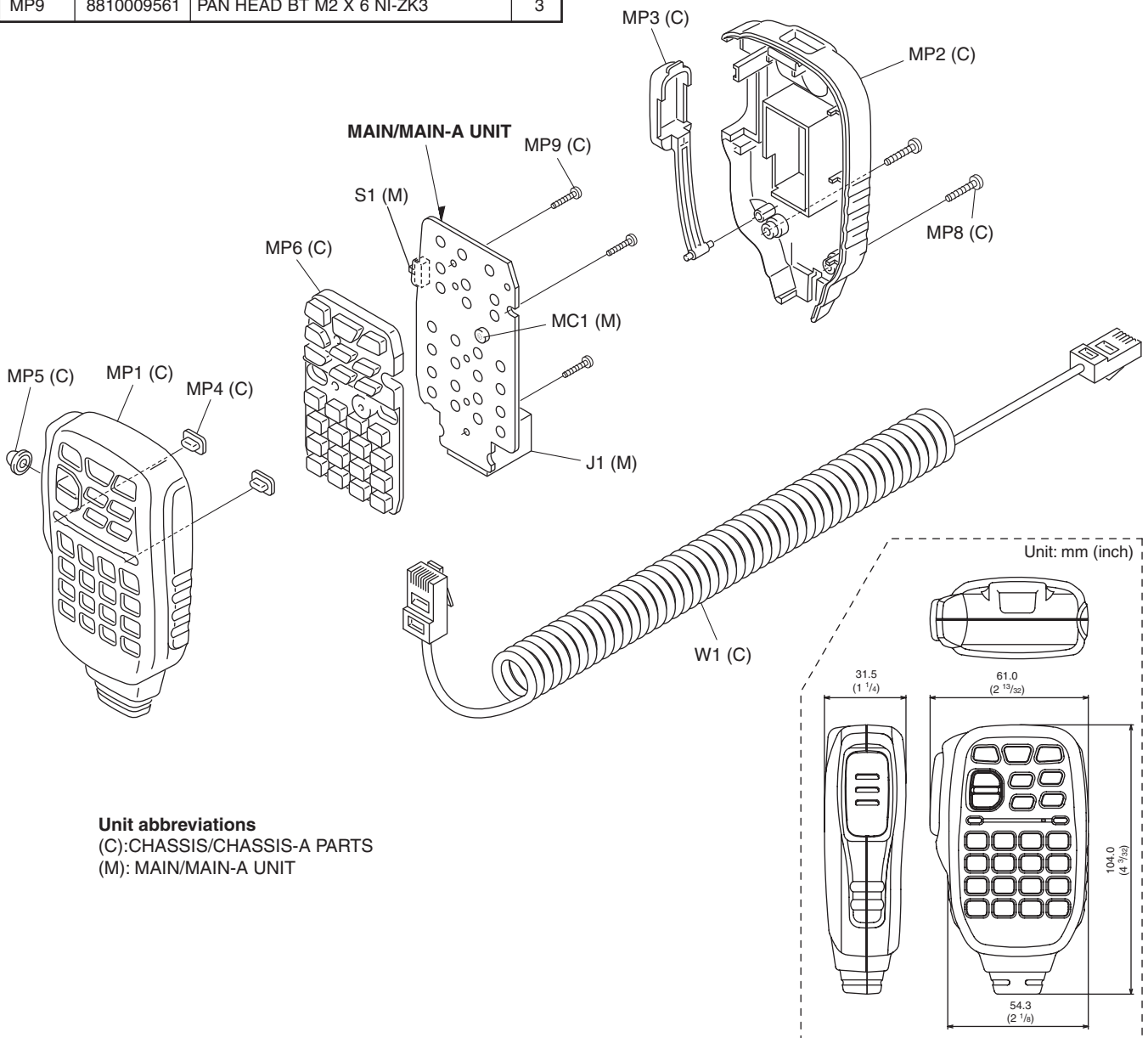
[MAIN-A UNIT] (For [GEN-02], [EXP])

REF. NO.	ORDER NO.	DESCRIPTION	QTY.
J1	6510023110	CONNECTOR 3008L-8P8C	1
S1	2260000980	SWITCH SKHHL014A	1
MC1	7700002850	EM6022P-65B-G	1

[CHASSIS-A PARTS] (For [GEN-02], [EXP])

REF. NO.	ORDER NO.	DESCRIPTION	QTY.
W1	8900011272	OPC-1153B <TJM>	1
MP1	8210025520	2539 A-FRONT PANEL(C)	1
MP2	8210025200	2539 A-REAR PANEL	1
MP3	8930077320	2539 A-PTT BUTTON	1
MP4	8930077300	2539 A-LENS	2
MP5	8930057570	2539 SW RUBBER	1
MP6	8930066540	2539 KEYBOARD(C)	1
MP8	8810009371	PAN HEAD BT M3 X12 NI-ZK3	2
MP9	8810009561	PAN HEAD BT M2 X 6 NI-ZK3	3

Screw abbreviations BT: Self-tapping
 PH: Pan head ZK: Black



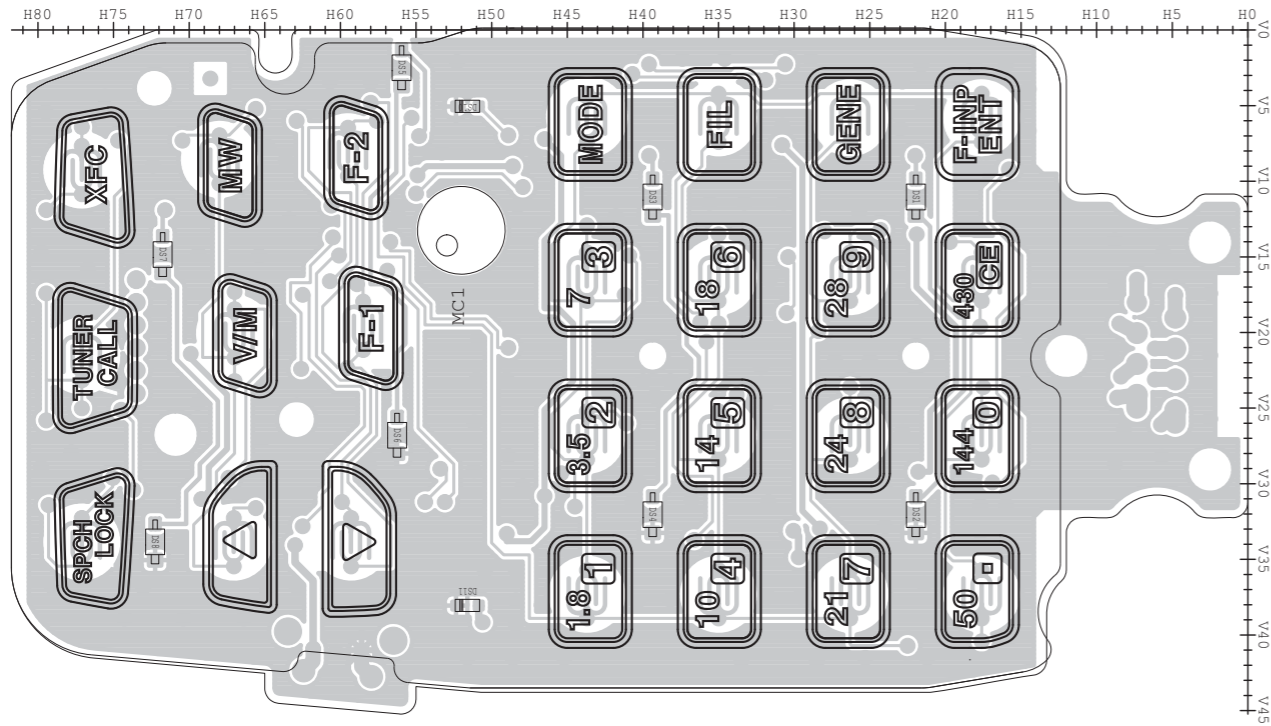
Unit abbreviations
 (C): CHASSIS/CHASSIS-A PARTS
 (M): MAIN/MAIN-A UNIT

SECTION 3

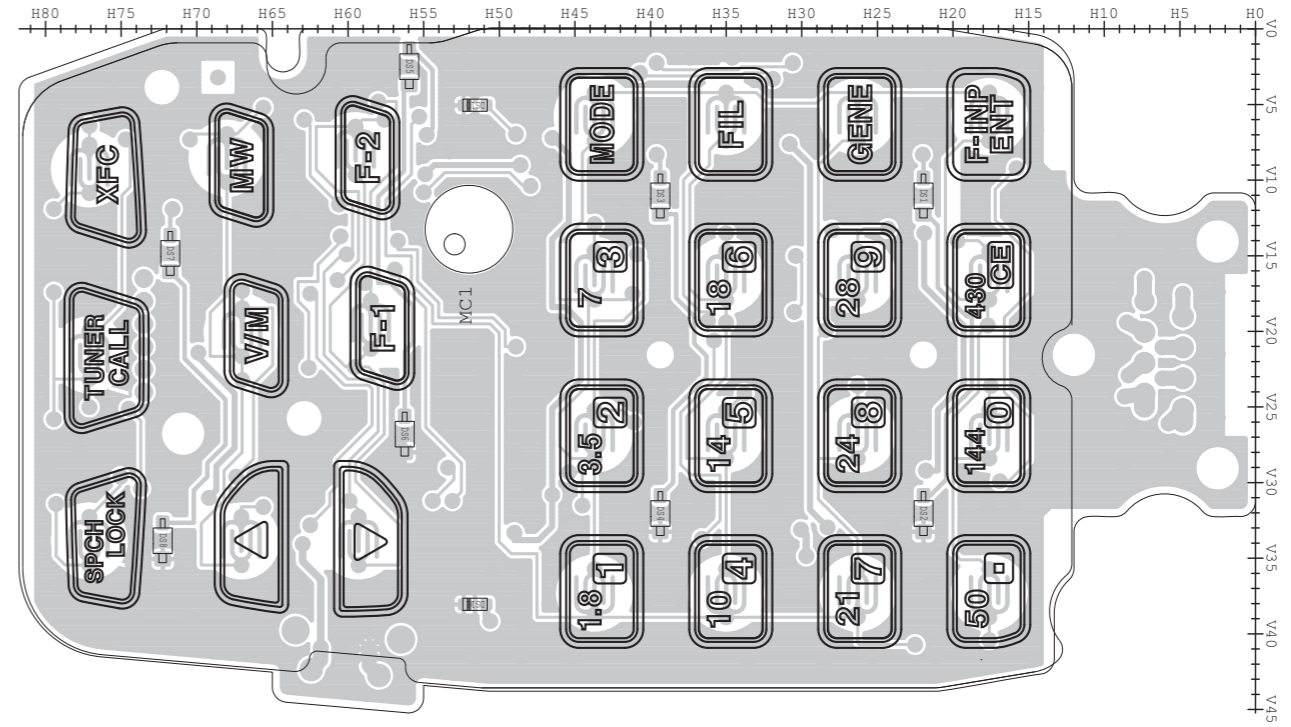
BOARD LAYOUTS

The combination of top side and bottom side of this page shows the actual configuration of P.C. board.

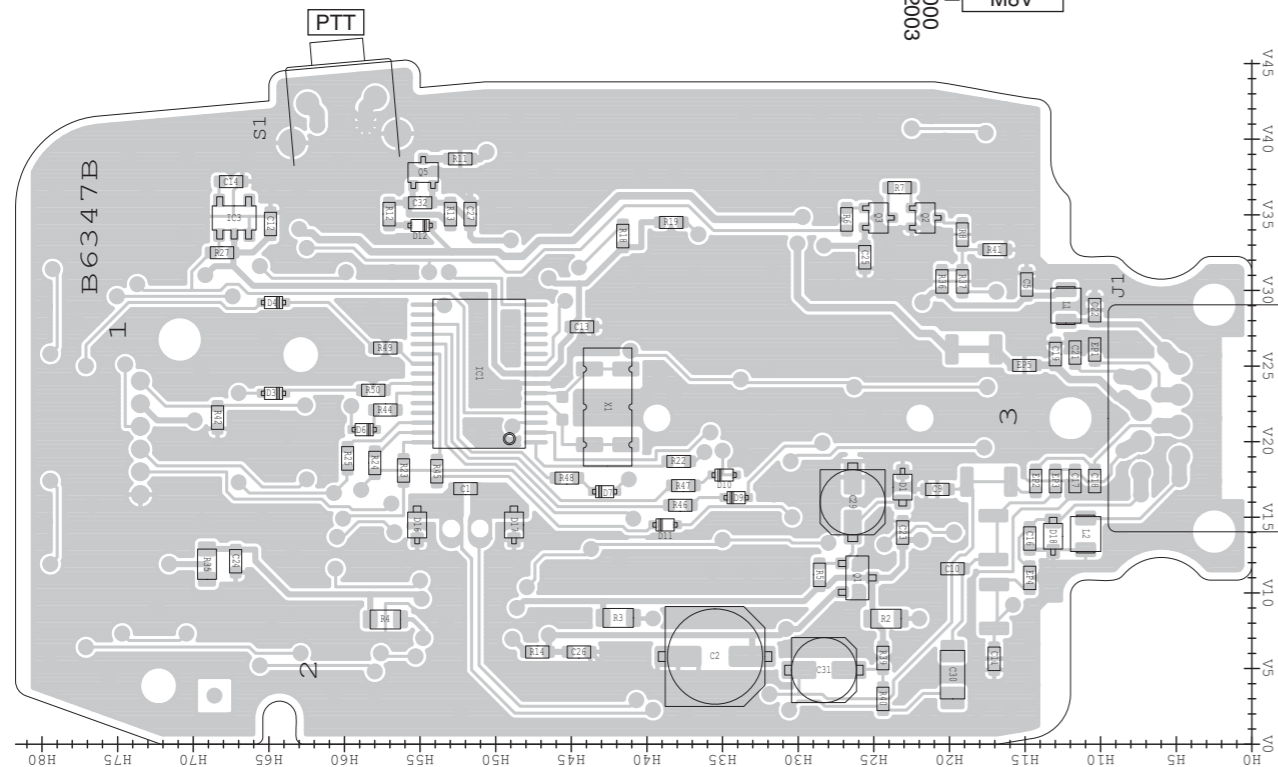
• MAIN UNIT (For [GEN], [GEN-1])
(TOP VIEW)



• MAIN-A UNIT (For [GEN-02], [EXP])
(TOP VIEW)



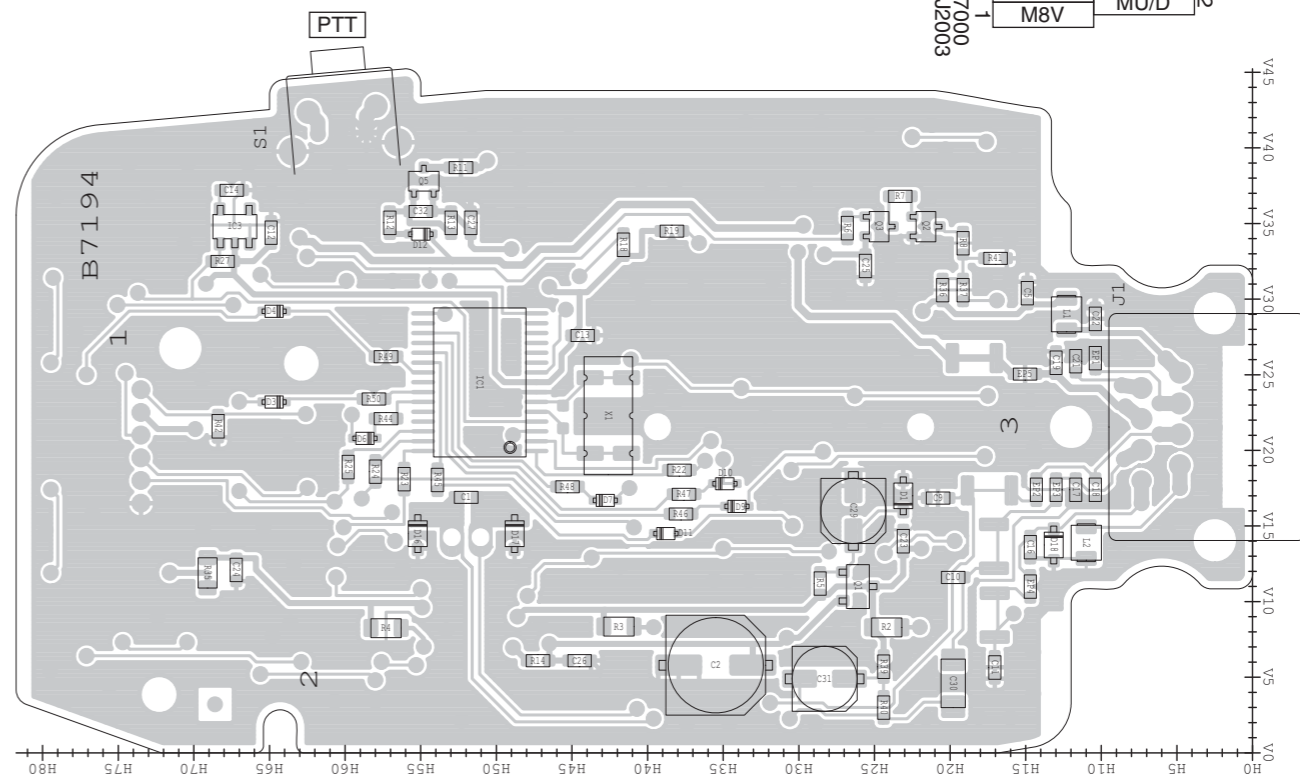
• MAIN UNIT (For [GEN], [GEN-1])
(BOTTOM VIEW)



7	E	MDATA	8
6	MICE	MIC	7
5	M8VSW	PTT	6
4	M8V	MU/D	5

to the IC-7000
0003
MAIN unit J2003

• MAIN-A UNIT (For [GEN-02], [EXP])
(BOTTOM VIEW)



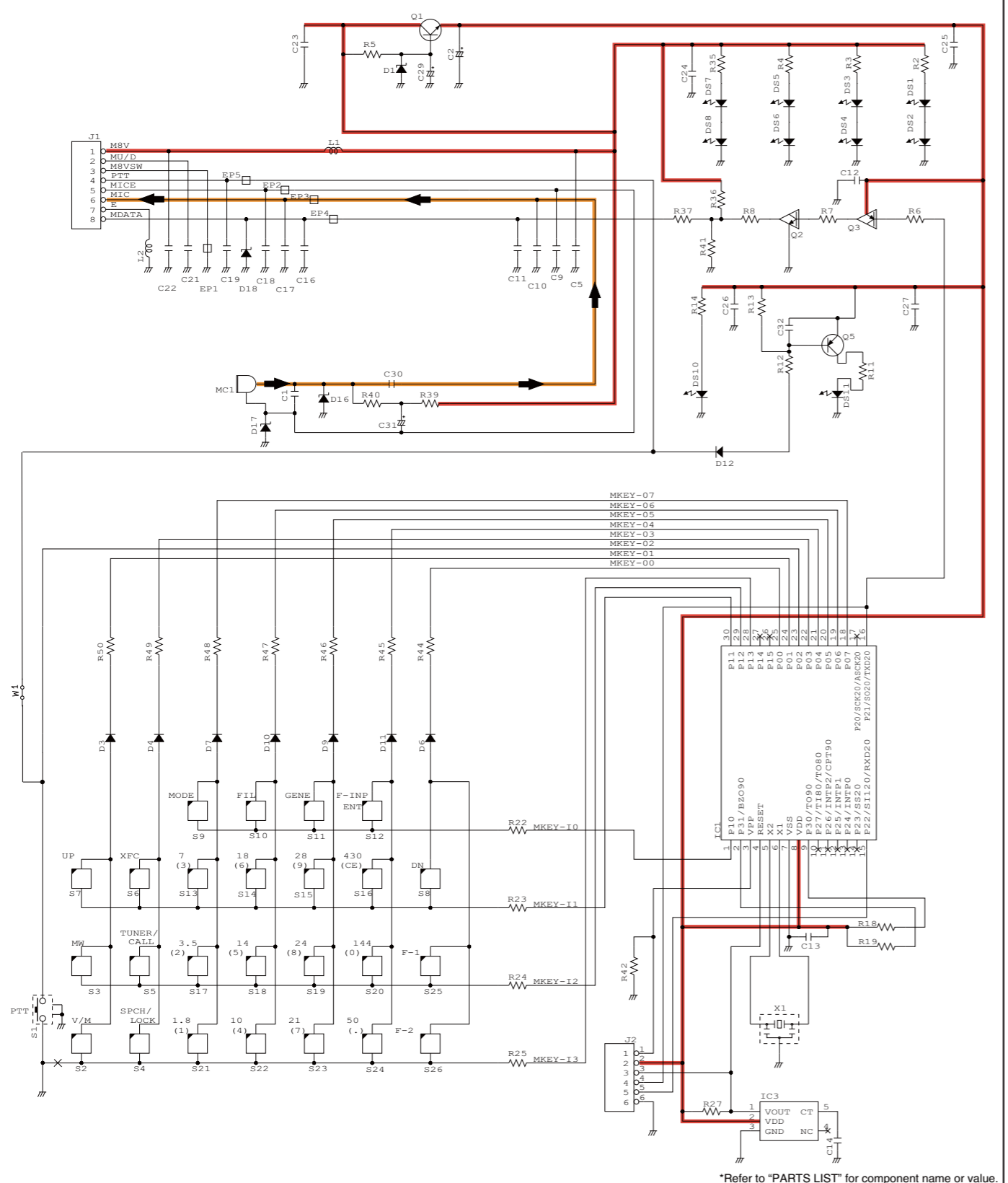
7	E	MDATA	8
6	MICE	MIC	7
5	M8VSW	PTT	6
4	M8V	MU/D	5

to the IC-7000
0003
MAIN unit J2003

SECTION 4

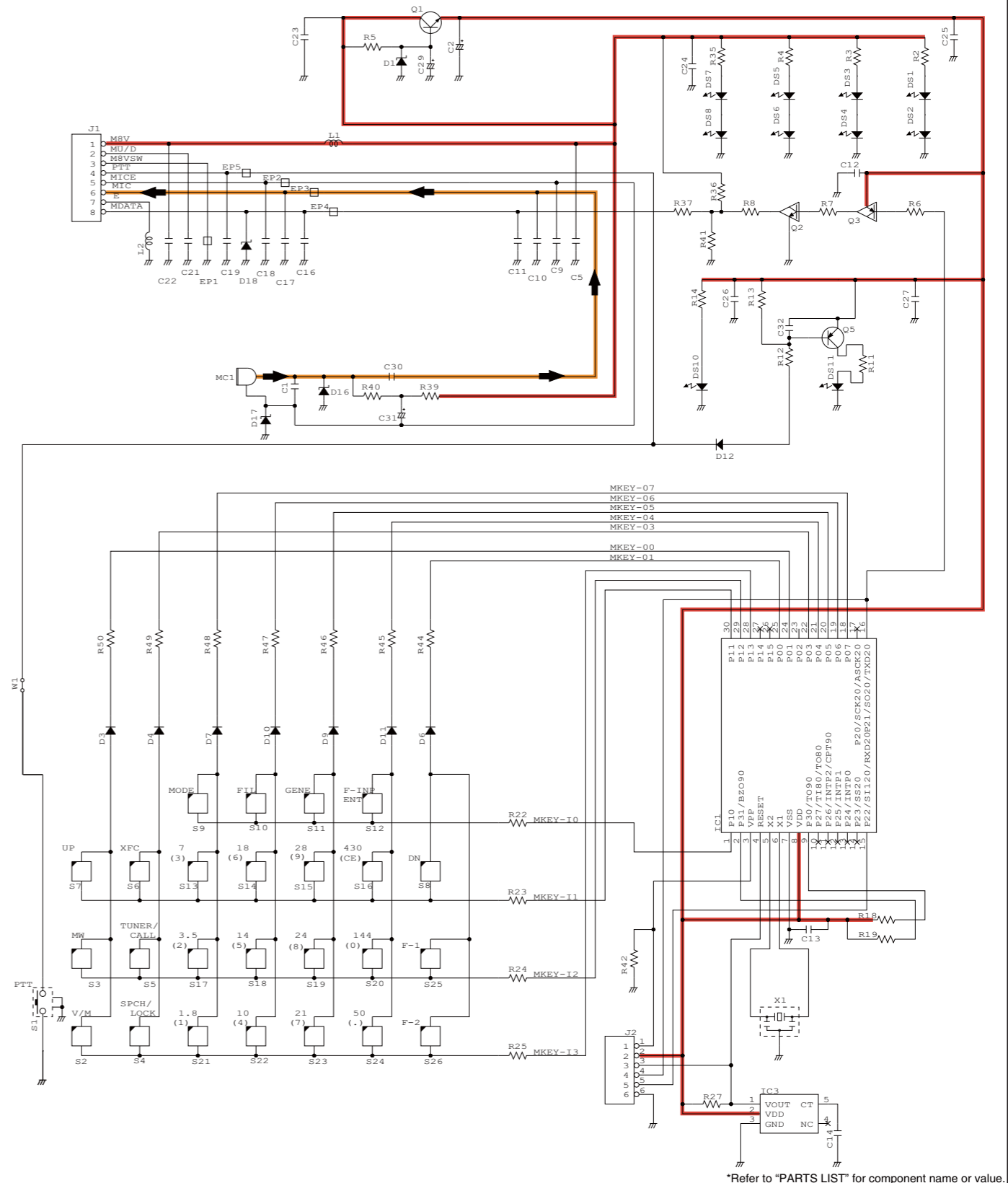
VOLTAGE DIAGRAM

MAIN UNIT (For [GEN], [GEN-1])



*Refer to 'PARTS LIST' for component name or value.

MAIN-A UNIT (For [GEN-02], [EXP])



*Refer to 'PARTS LIST' for component name or value.

Icom Inc.

1-1-32, Kamiminami, Hirano-ku, Osaka 547-0003, Japan
Phone : +81 (06) 6793 5302
Fax : +81 (06) 6793 0013
URL : <http://www.icom.co.jp/world/index.html>

Icom America Inc.

<Corporate Headquarters>
2380 116th Avenue N.E., Bellevue, WA 98004, U.S.A.
Phone : +1 (425) 454-8155 Fax : +1 (425) 454-1509
URL : <http://www.icomamerica.com>
E-mail : sales@icomamerica.com
<Customer Service>
Phone : +1 (425) 454-7619

Icom Canada

Glenwood Centre #150-6165
Highway 17 Delta, B.C., V4K 5B8, Canada
Phone : +1 (604) 952-4266 Fax : +1 (604) 952-0090
URL : <http://www.icomcanada.com>
E-mail : info@icomcanada.com

Icom (Australia) Pty. Ltd.

Unit 1 / 103 Garden Road, Clayton VIC 3168 Australia
Phone : +61 (03) 9549-7500 Fax : +61 (03) 9549-7505
URL : <http://www.icom.net.au>
E-mail : sales@icom.net.au

Icom New Zealand

146A Harris Road, East Tamaki,
Auckland, New Zealand
Phone : +64 (09) 274 4062 Fax : +64 (09) 274 4708
URL : <http://www.icom.co.nz>
E-mail : inquiries@icom.co.nz

Beijing Icom Ltd.

10C07, Long silver Mansion, No.88, Yong Ding
Road, Haidian District, Beijing, 100039, China
Phone : +86 (010) 5889 5391/5392/5393
Fax : +86 (010) 5889 5395
E-mail : bjicom@bjicom.com
URL : <http://www.bjicom.com>

Icom (Europe) GmbH

Communication Equipment
Auf der Krautweide 24
65812 Bad Soden am Taunus, Germany
Phone : +49 (6196) 76685-0 Fax : +49 (6196) 76685-50
URL : <http://www.icomeurope.com>
E-mail : info@icomeurope.com

Icom Spain S.L

Ctra. Rubi, No. 88 Bajos A 08174, Sant Cugat del Valles, Barcelona, Spain
Phone : +34 (93) 590 26 70 Fax : +34 (93) 589 04 46
URL : <http://www.icomspain.com>
E-mail : icom@icomspain.com

Icom (UK) Ltd.

Blacksole House, Altira Park, Herne Bay, Kent CT6 6GZ, UK
Phone : +44 (01227) 741741 Fax : +44 (01227) 741742
URL : <http://www.icomuk.co.uk>
E-mail : info@icomuk.co.uk

Icom France s.a.s.

Zac de la Plaine
1 Rue Brindejonc des Moulinais BP 5804
31505 Toulouse Cedex, France
Phone : +33 (5) 61 36 03 03 Fax : +33 (5) 61 36 03 00
URL : <http://www.icom-france.com>
E-mail : icom@icom-france.com

Asia Icom Inc.

6F No.68, Sec. 1 Cheng-Teh Road, Taipei, Taiwan, R.O.C.
Phone : +886 (02) 2559 1899 Fax : +886 (02) 2559 1874
URL : <http://www.asia-icom.com>
E-mail : sales@asia-icom.com

Icom Polska

81-850 Sopot, ul. 3 Maja 54, Poland
Phone : +48 (58) 550 7135 Fax : +48 (58) 551 0484
E-mail : icompolska@icompolska.com.pl

Count on us!

Icom Inc.

1-1-32, Kamiminami, Hirano-ku, Osaka 547-0003, Japan

S-14526XZ-C1-①
© 2009 Icom Inc.